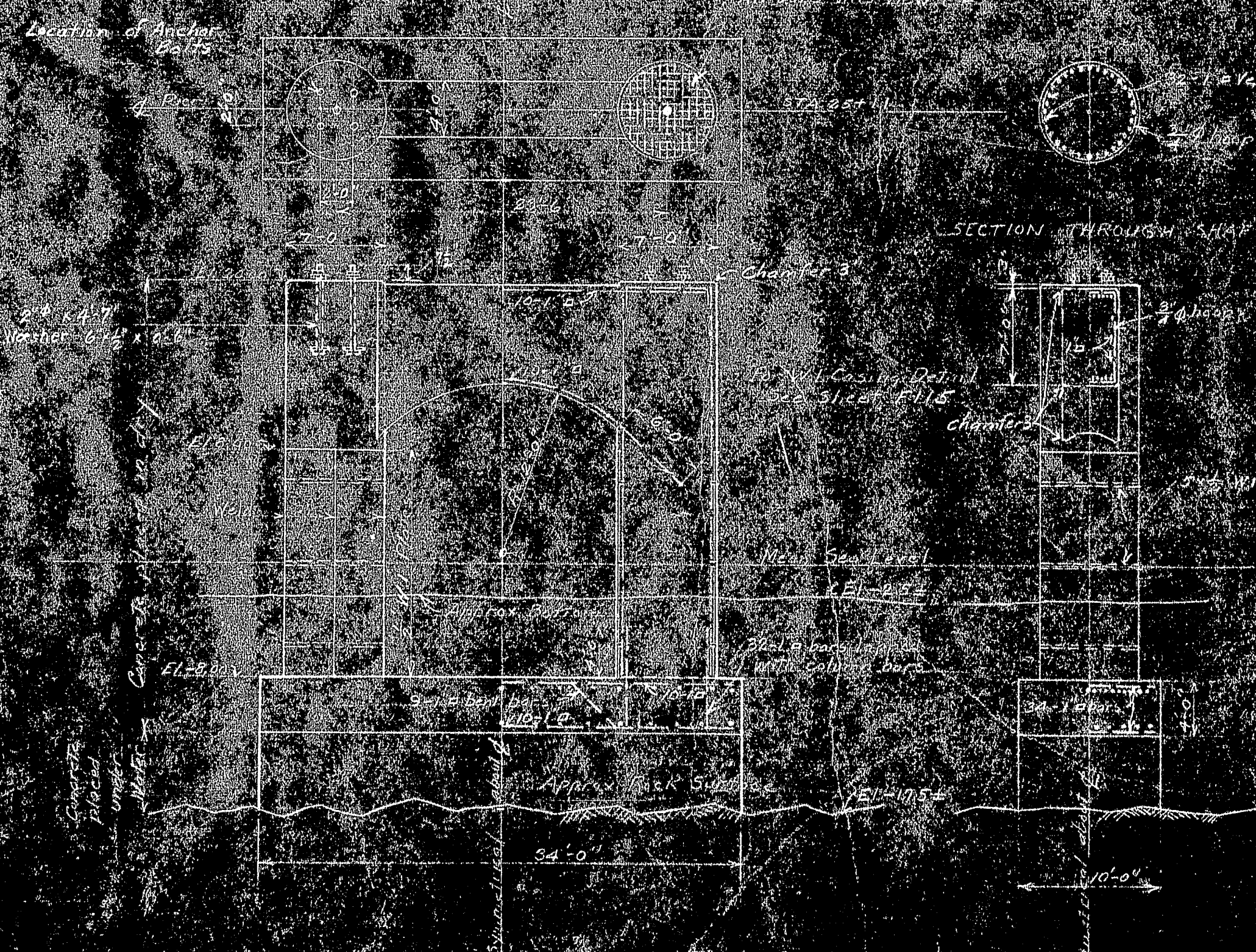
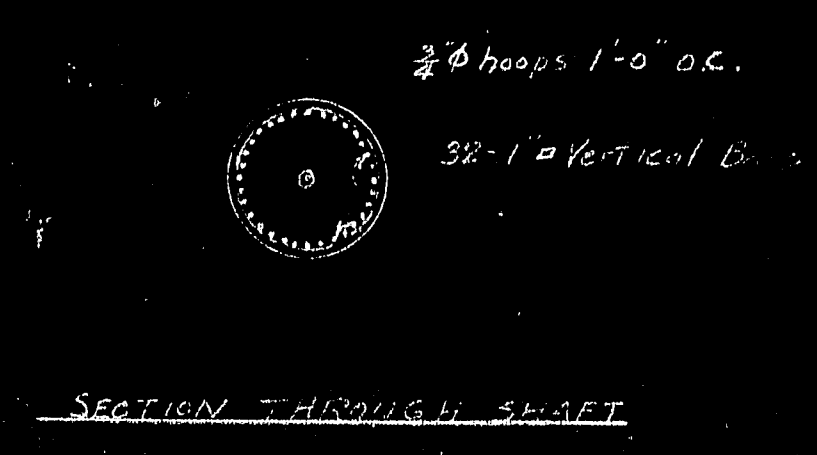


PIER NO. 6

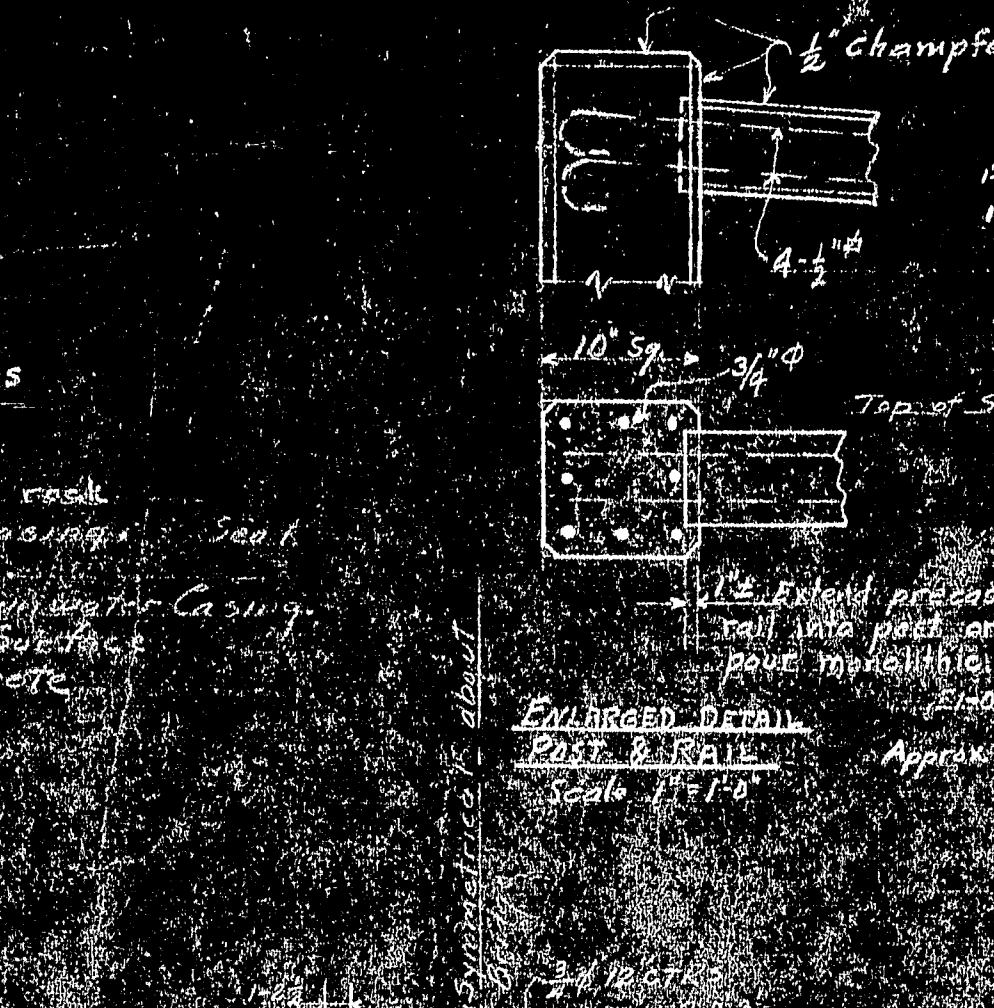


PIER NO. 3

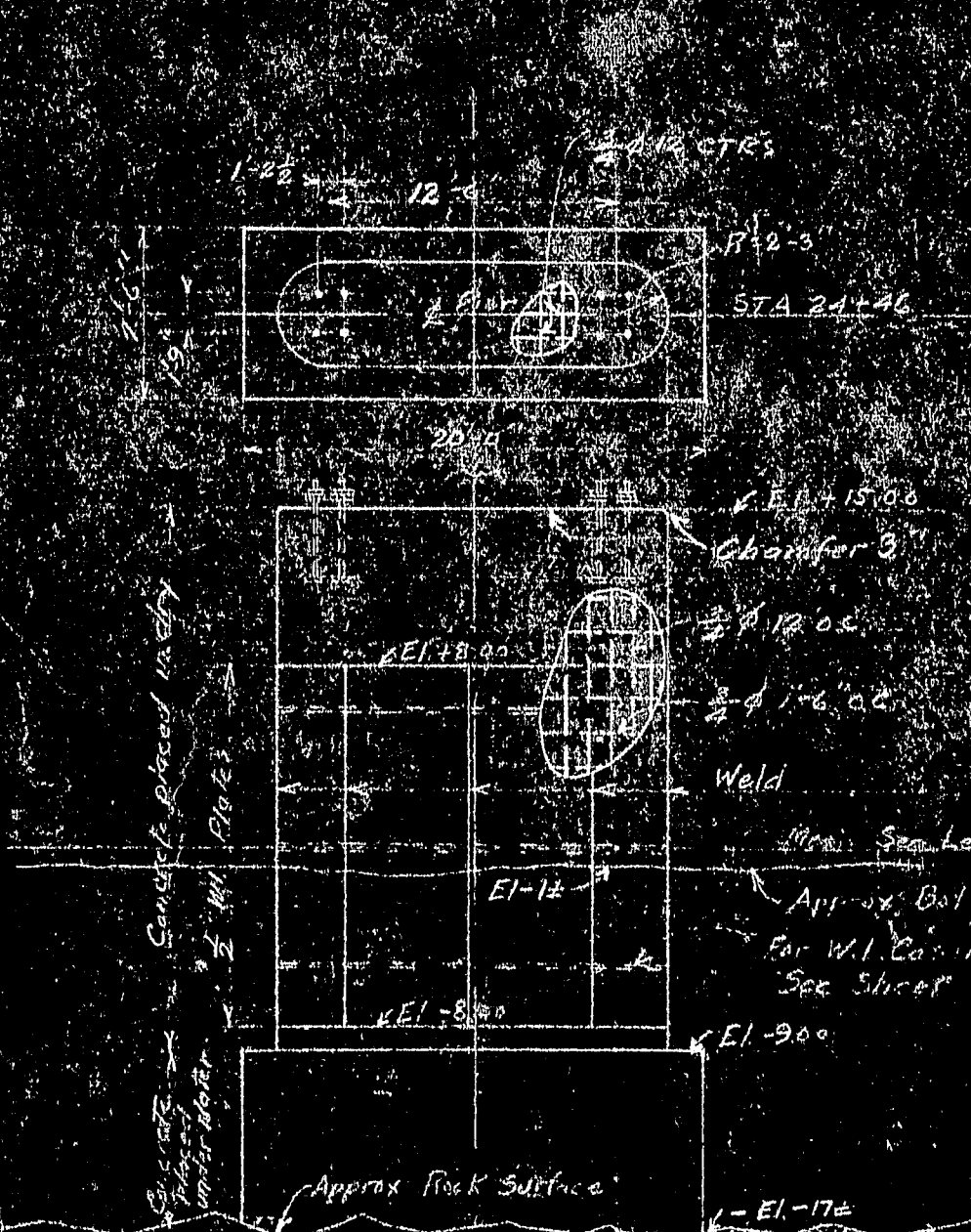
SPECIAL NOTE:
Should contractor choose to unwater site of Pier 3
by use of dam, well points or other means,
the 7' foot pillars may be founded directly on rock
as in Pier No. 6, the concrete base being omitted.
W.I. Casing must be carried down to EL - 8.00.



SECTION THROUGH SHAFT

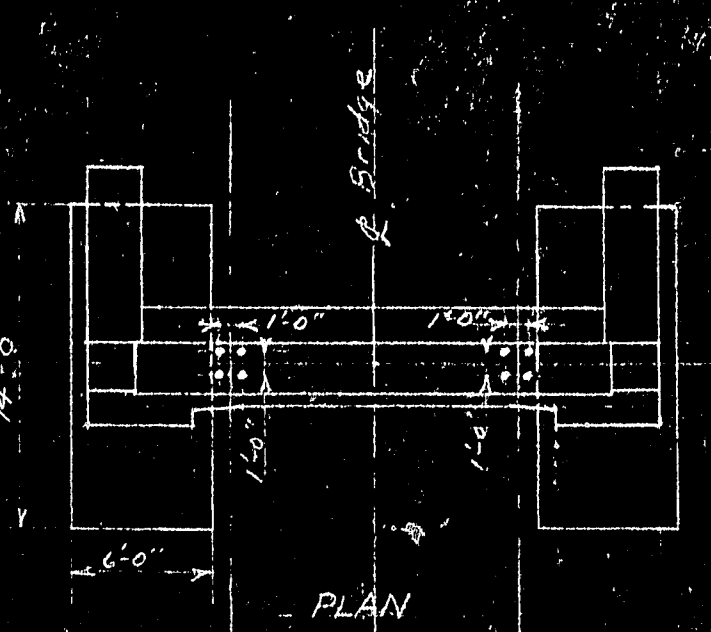


PIER NO. 7

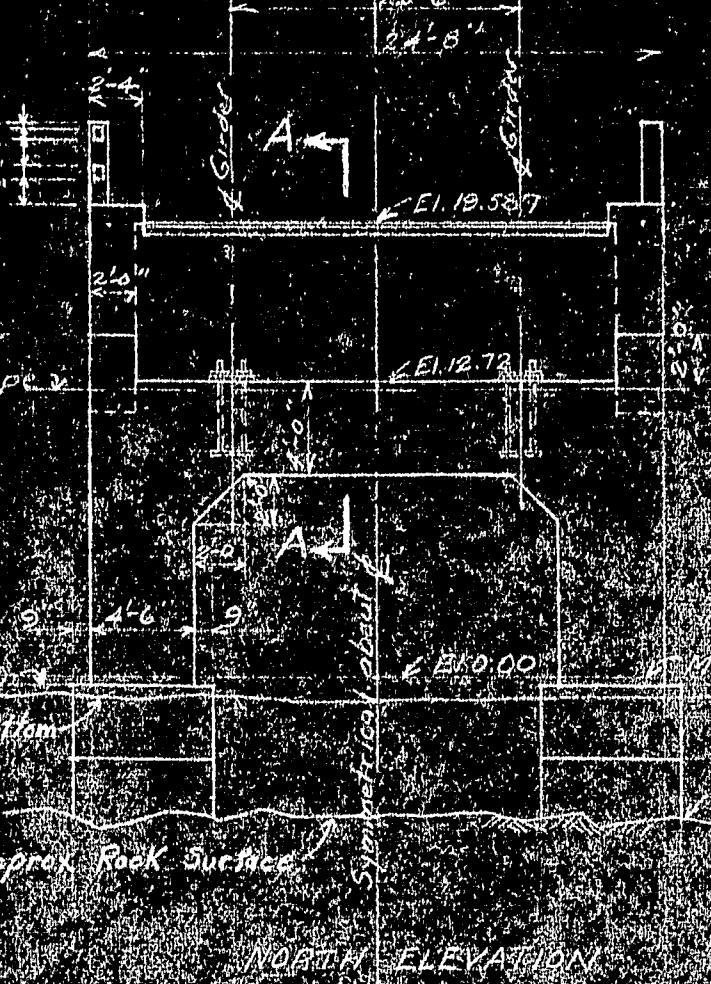


PIER NO. 2

SPECIAL NOTE:
Should contractor choose to unwater site of Pier 2 or Pier 1
by use of dam, well points or other means,
the pier may be founded directly on rock as shown
for Pier No. 7, the base being omitted.

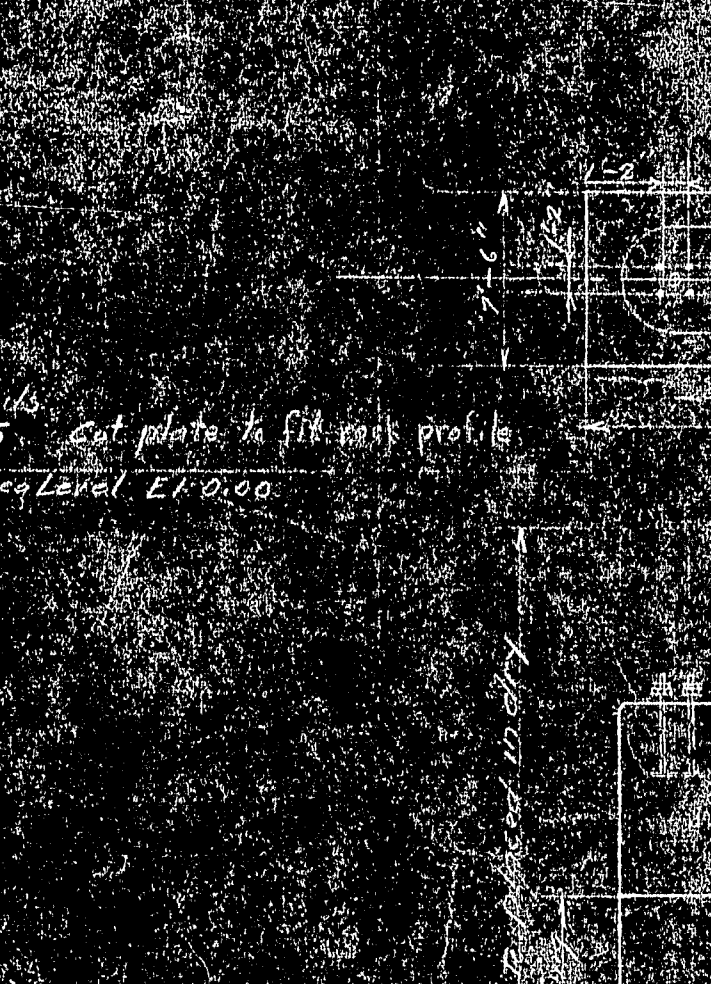


PLAN

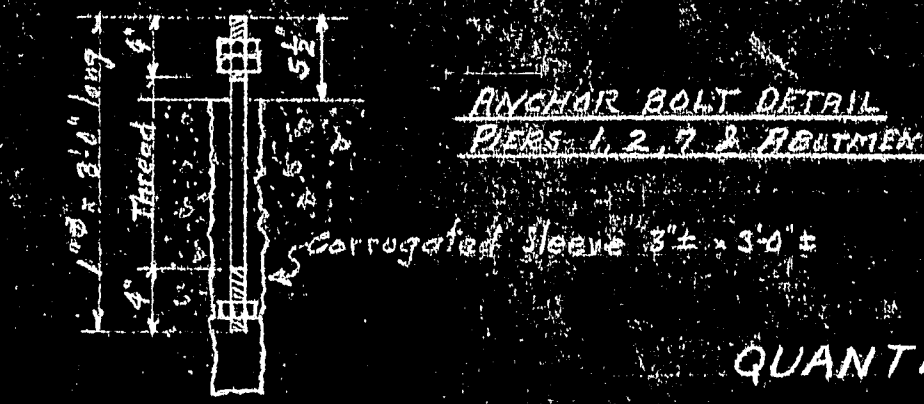


SECTION

DEER ISLE ABUTMENT



PIER NO. 1



ANCHOR BOLT DETAIL
PIERS 1, 2, 7 & ABUTMENT

QUANTITIES

ITEM	UNIT	PIER 1	PIER 2	PIER 3	PIER 6	PIER 7	DEER ISLE ABUTMENT
CONCRETE PLACED UNDER WATER	Cu yd.	22	44	69	—	—	16
CONCRETE PLACED IN DRY	Cu yd.	180	64	151	97	40	85
Reinforcement	lb	2310	2570	37710	11300	1370	6980
Wrought iron	lb	—	13600	15270	14870	4930	—
Water proofing	Sq. ft.	548	—	—	—	—	—

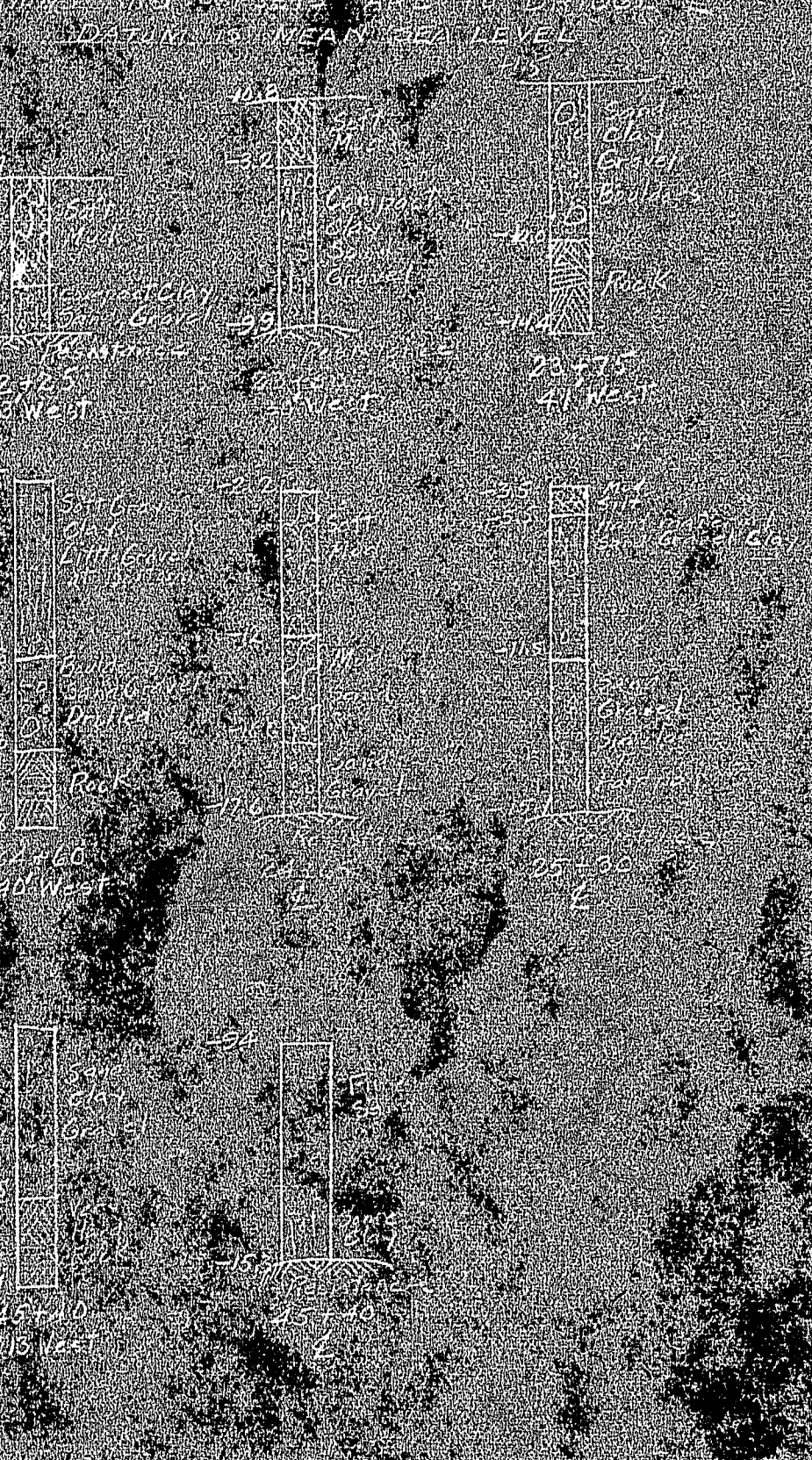
SECTION A-A

Enlarged Detail showing
Roadway Dam

Scale 1" = 1'-0"

REQUIREMENTS:
Class A in accordance with AASHTO specifications.
Concrete placed under water shall be Class A in accordance with AASHTO specifications.
ANCHOR BOLTS, ETC. Anchor bolts and roadway dams shall be furnished by the contractor for the superstructure and shall be placed by the contractor for the substructure. The latter shall provide a steel frame to hold the bolts in the concrete position. All reinforcement shall be placed in the concrete before the concrete is poured. Water proofing shall be of the best material or of approved equal. See specifications.

BOULDER



REMARKS:
1. The boulder field is located in the center of the bridge approach.
2. The boulders are of various sizes, from 1' to 12' in diameter.
3. The boulder field is to be removed and replaced with concrete.

SUBSTRUCTURE
PWA PROJECT NO. ME 1010
DEER ISLE SEDGWICK BRIDGE DISTRICT
BRIDGE OVER EGGENOGGIN REACH
FROM LITTLE DEER ISLE TO SEDGWICK
HANCOCK COUNTY, MAINE

CABLE BENT PIERS
VIADUCT PIERS AND ABUTMENT

ROBINSON AND STEINMAN
ENGINEERS
NEW YORK CITY
SCALE 1" = 1'-0"
DRAWING NUMBER
RS 3310 - F114
SEPTEMBER 4, 1937

